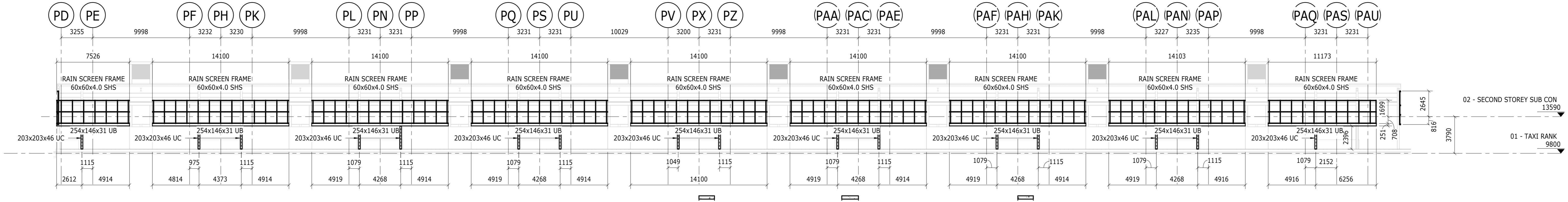
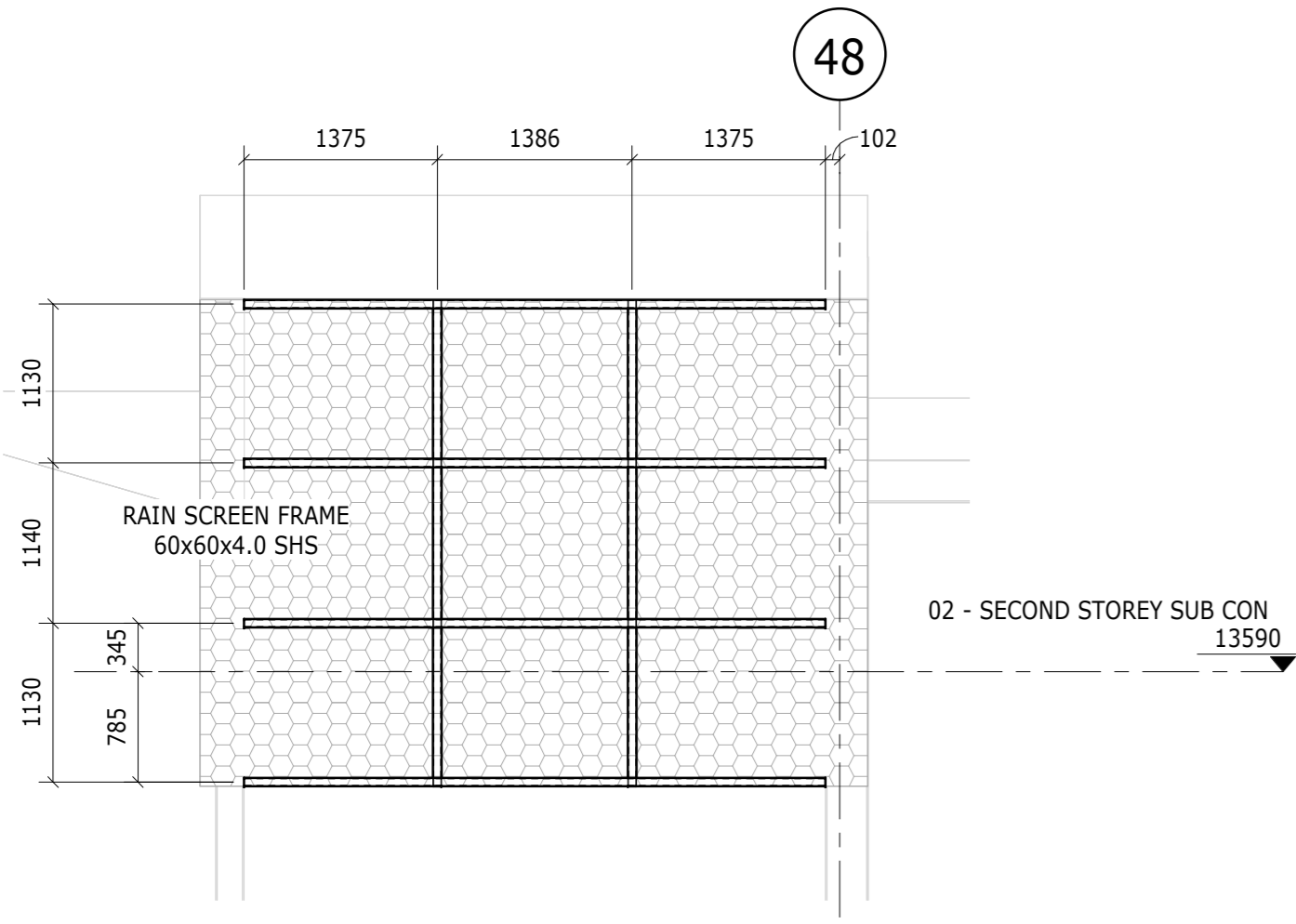


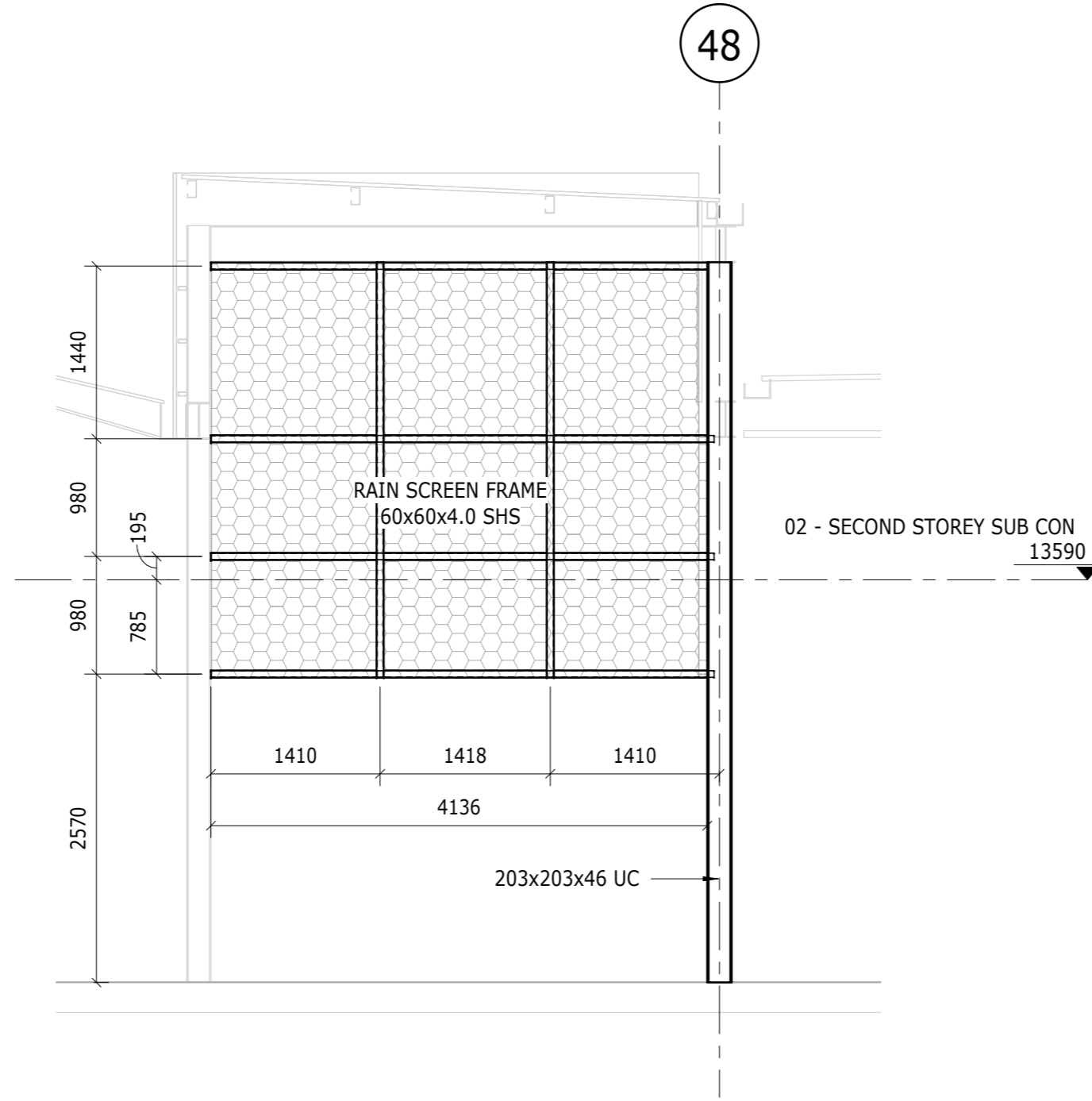
RAIN SCREEN LAYOUT  
SCALE 1:200



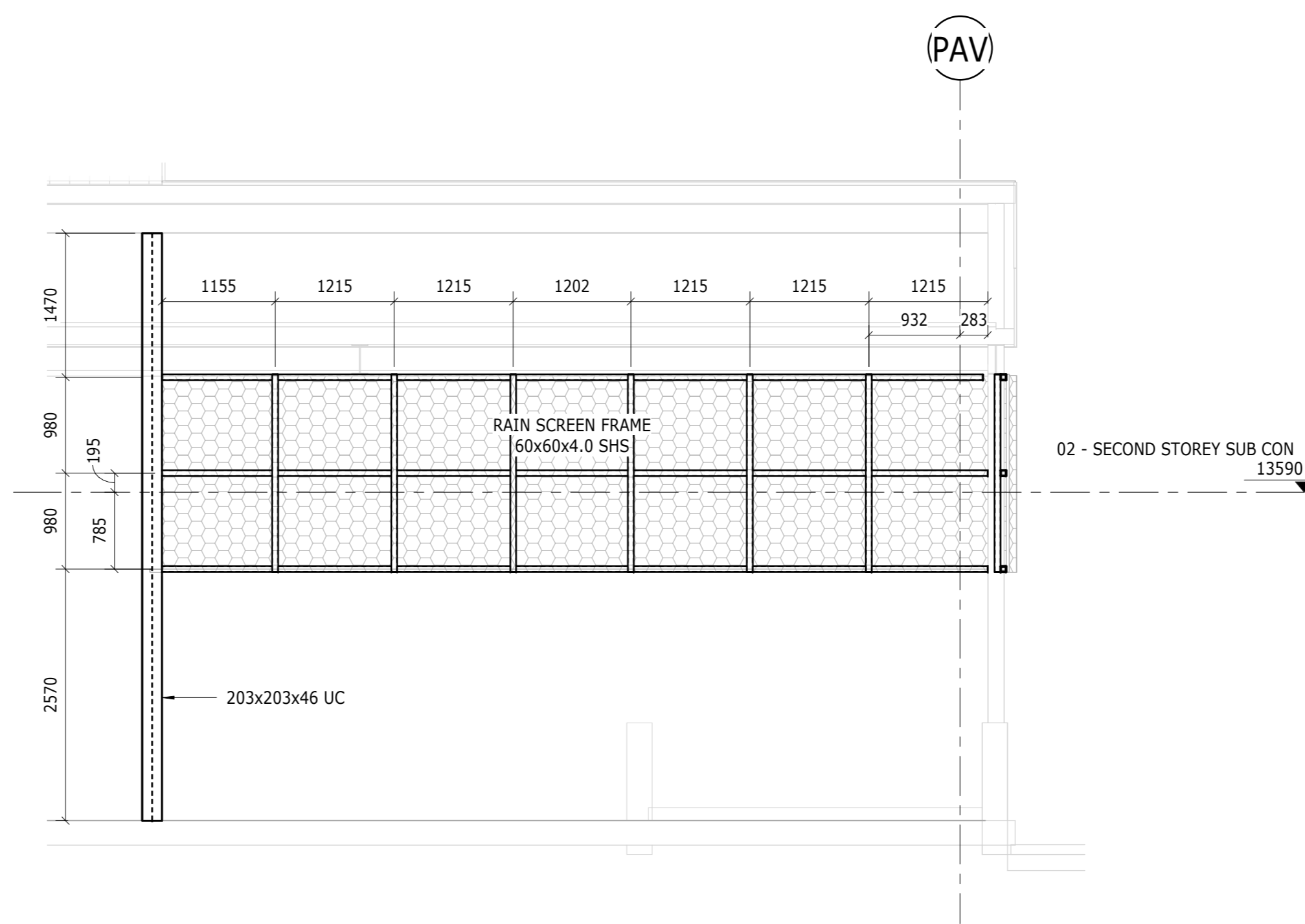
ELEVATION 1  
Scale 1 : 200



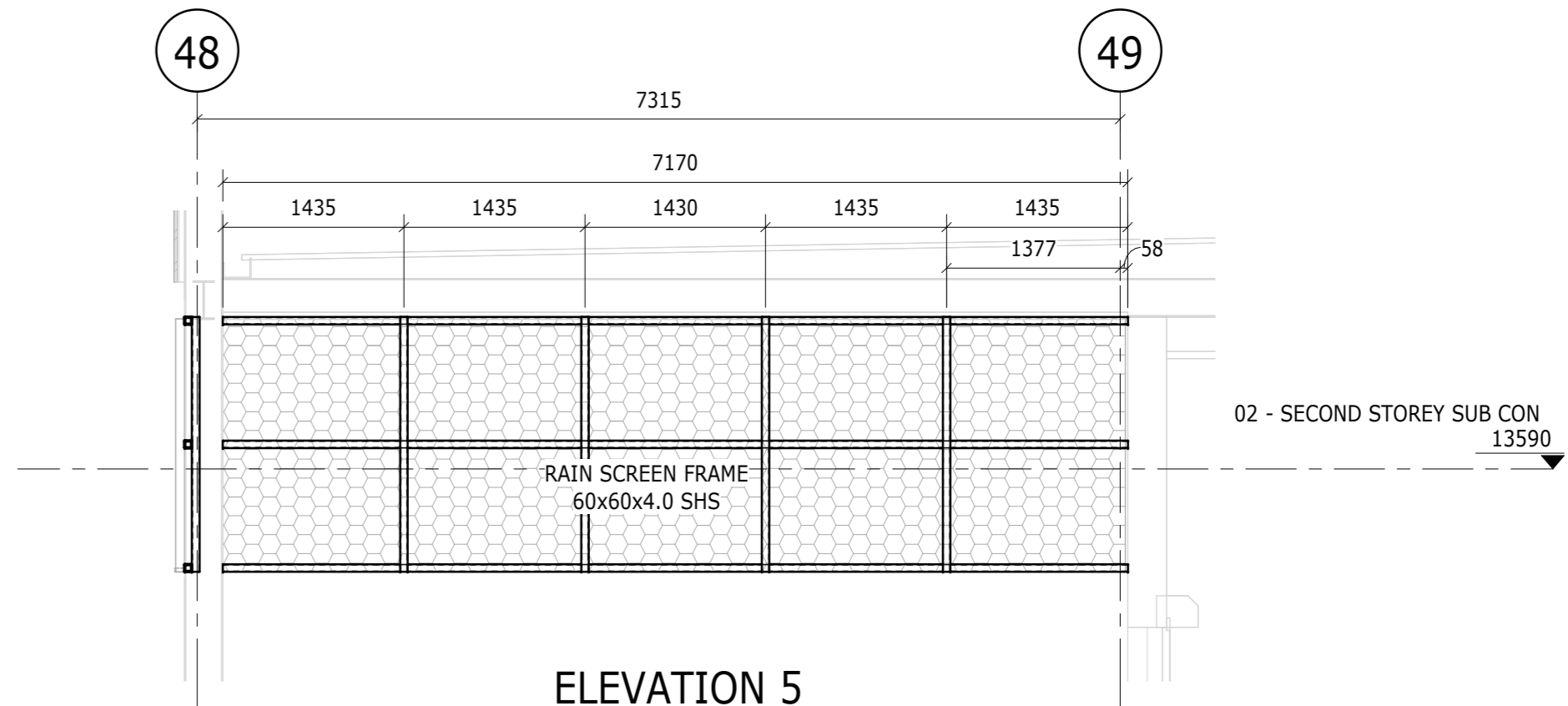
ELEVATION 2  
Scale 1 : 50



ELEVATION 3  
Scale 1 : 50



ELEVATION 4  
Scale 1 : 50



ELEVATION 5  
Scale 1 : 50

**GA GladAfrica**  
Consulting Engineers

**APPROVAL STATUS:**

FOR INFORMATION ☒ TENDER ☐ CONSTRUCTION  
PRELIMINARY ☐ DESIGN ☐ AS BUILT

NAME: R. THYS  
PR.NO: 20180331  
DATE: 2022-03-17  
SIGNATURE: \_\_\_\_\_

Rev	Date	Description	Name
A	22-01-28	FOR INFORMATION	AAF
B	22-03-18	FOR INFORMATION	AAF

SCOPE OF WORKS NOTE:

S1: STRUCTURAL REPAIRS TO CRACKED, SPALLED, WATER AND FIRE DAMAGED CONCRETE ELEMENTS I.E. SLABS, BEAMS, COLUMNS AND WALLS. APPROX = 16 500 m2

S2: STRUCTURAL REPAIR TO CRACKED BRICK WALLS (BRICKWORK STITCHING IF REQUIRED). APPROX = 200 m2

S3: REMOVE AND REPLACE ALL SEALANTS AND BACKING CORDS TO THE EXISTING MOVEMENT JOINTS IN COLUMNS, SLABS AND BEAMS, ETC. APPROX = 15 000 m2

S4: NEW PRE-CAST OR CAST IN-SITU RC EDGE CORING SLAB TO MATCH THE NEW RAISED PLATFORM LEVEL. PORTION WHERE PLATFORM REST ON BASEMENT SLABS WILL REQUIRE CAPACITY CHECKS. SEE MARK-UP DRAWING CEIC158 - ST - ST3 - 100 OA - TYPICAL SECTION THROUGH PLATFORM EDGE CORING MARK-UPS.

S5: CAST NEW 15MPa MASS CONCRETE STAIRS WHERE RAISED PLATFORMS STOP SHORT OF PERIMETER WALLS. ON MINIMUM 150mm IN-SITU RIP AND RECOMPACTED MATERIAL TO 95% MOD AASHTO, COMPLETE WITH 10mm SOFT BOARD GAP JOINT AND APPROVED POLYURETHANE SEALANT. APPROX = 5 m3

S6: REPLACE OF PRE-CAST CONCRETE ROOF PLANKS ON PLATFORMS TO MATCH EXISTING. APPROX = 8 000 m2

S7: REMOVE 4NO. PLATFORM ESCALATORS AND REPLACE WITH NEW CAST IN-SITU RC STAIRS TO MATCH THE SHAPE OF THE EXISTING STAIRCASES. COMPLETE WITH SUPPORTING RC BEAMS, COLUMNS AND FOUNDATIONS. SEE DRAWING CEIC158 - ST - 102

S8: REMOVE AND REPLACEMENT OF ALL WATERPROOFING TO THE EXISTING BUTTERFLY ROOFS TO ARCHITECTS SPECIFICATIONS.

S9: STRUCTURAL DESIGN OF THE SECONDARY STEEL SUPPORT FRAME FOR THE NEW RAINSCREEN CLADDING ON THE TAXI RANK WALKWAY. STEEL TONNAGES = 20 kg/m2

S10: STRUCTURAL DESIGN FOR THE MEZZANINE FLOOR AND ROOF STRUCTURE TO ACCOMMODATE CENTRAL TICKET OFFICE STAFF SUPPORT AREAS. FLOOR SUPPORT STRUCTURAL STEEL TONNAGES = 25 kg/m2 STRUCTURAL STEEL ACCESS STAIRCASE STEEL TONNAGES = 25 kg/m2 BOND-LOK SLAB, COMPLETE WITH SHEAR STUDS, 120mm THICK 20 MPa CONCRETE AND MESH REF 611. APPROX = 255 m2

S11: STRUCTURAL DESIGN ON THE NEW SECONDARY SUPPORT STEEL FOR PARADE CONCOURSE FACIA REPAIRS AT SOUTH END. STEEL TONNAGES = 16 kg/m2

S12: STRUCTURAL DESIGN OF THE NEW CENTRAL RETAIL KIOSKS. SEE DRAWING CEIC158 - ST - 200

S13: STRUCTURAL INPUT AND STEEL LINTEL REQUIREMENTS ON THE BUILDING ALTERATIONS. ALLOW FOR STEEL LINTEL SUPPORT = 357x165x40 UB APPROX LENGTH 80m

CLIENT:

**prasa**  
PASSENGER RAIL AGENCY OF SOUTH AFRICA

ARCHITECT:

**ruben reddy architects**

CONSULTANT:

**GA GladAfrica**  
Consulting Engineers

Gauteng Office (Head Office)  
GladAfrica House/Jortford Office Park  
99 Baker Road/Vere Valley/Midrand 1696  
P.O. Box 6732 Halfway House 1685  
Tel: +27 11 312 2337/2384  
Fax: +27 11 895 1950  
www.gladfrica.com

NAME	REG. NO.	SIGNATURE
A. FORLEY	N/A	
R. THYS	20180331	
E. TLOMATSA	2017305033	

PROJECT DESCRIPTION

CAPE TOWN STATION

DRAWING TITLE

RAIN SCREEN LAYOUT AND ELEVATION

STATUS LEGEND

I = INFORMATION  
C = CONCEPT AND VIABILITY  
D = DESIGN DEVELOPMENT  
T = TENDER  
C = CONSTRUCTION  
AB = AS BUILT

SHEET SIZE

A0

SCALE

As indicated

DISCIPLINE	DRAWING NUMBER	STATUS	REVISION
STRUCTURAL	CEIC158-ST-201	I	B